

# MONTHLY MEMBERSHIP PROGRESS REPORT

LOCATION MINNESOTA

District 5M 11

Results as of: 4/30/2023

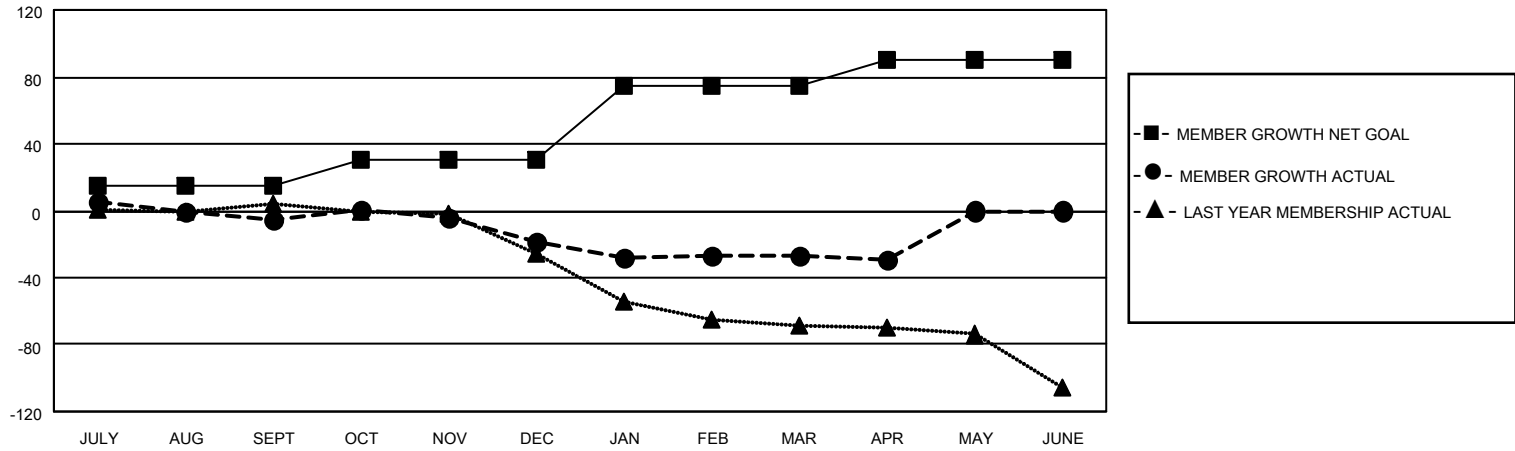
Clubs			
RESULTS FOR 2022-2023			
QUARTER	NEW CLUB GOAL	NEW CLUBS	DROPPED CLUBS
JULY/AUG/SEPT	0	0	0
OCT/NOV/DEC	0	0	0
JAN/FEB/MAR	1	0	0
APR/MAY/JUNE	0	0	0

Members			
RESULTS FOR 2022-2023			
QUARTER	MEMBER GROWTH NET GOAL	MEMBER GROWTH ACTUAL	DROPPED MEMBERS ACTUAL (including transfers)
JULY/AUG/SEPT	15	35	26
OCT/NOV/DEC	15	32	39
JAN/FEB/MAR	45	32	37
APR/MAY/JUNE	15	13	13

**GOALS AND ACTUAL NEW CLUBS CUMULATIVE**



**GOALS AND ACTUAL MEMBERS CUMULATIVE**



DROPPED CLUBS: 0	
<b>DROPPED MEMBERS</b>	
DECEASED	18
CLUB CANCELLED	0
OTHER	97
<b>TOTAL</b>	<b>115</b>

32 CLUBS OF 63 ADDED 1 OR MORE NEW MEMBERS

[CLICK HERE FOR CUMULATIVE MEMBERSHIP DATA](#)

<u>GENDER DISTRIBUTION</u>	
MALE	1,105 (69.50%)
FEMALE	485 (30.50%)
NON BINARY	0 (0.00%)
PREFER NOT TO ANSWER	0 (0.00%)
<b>TOTAL FAMILY UNIT MEMBERS</b>	<b>317</b>
<b>FAMILY MEMBERS PAYING HALF DUES</b>	<b>162</b>